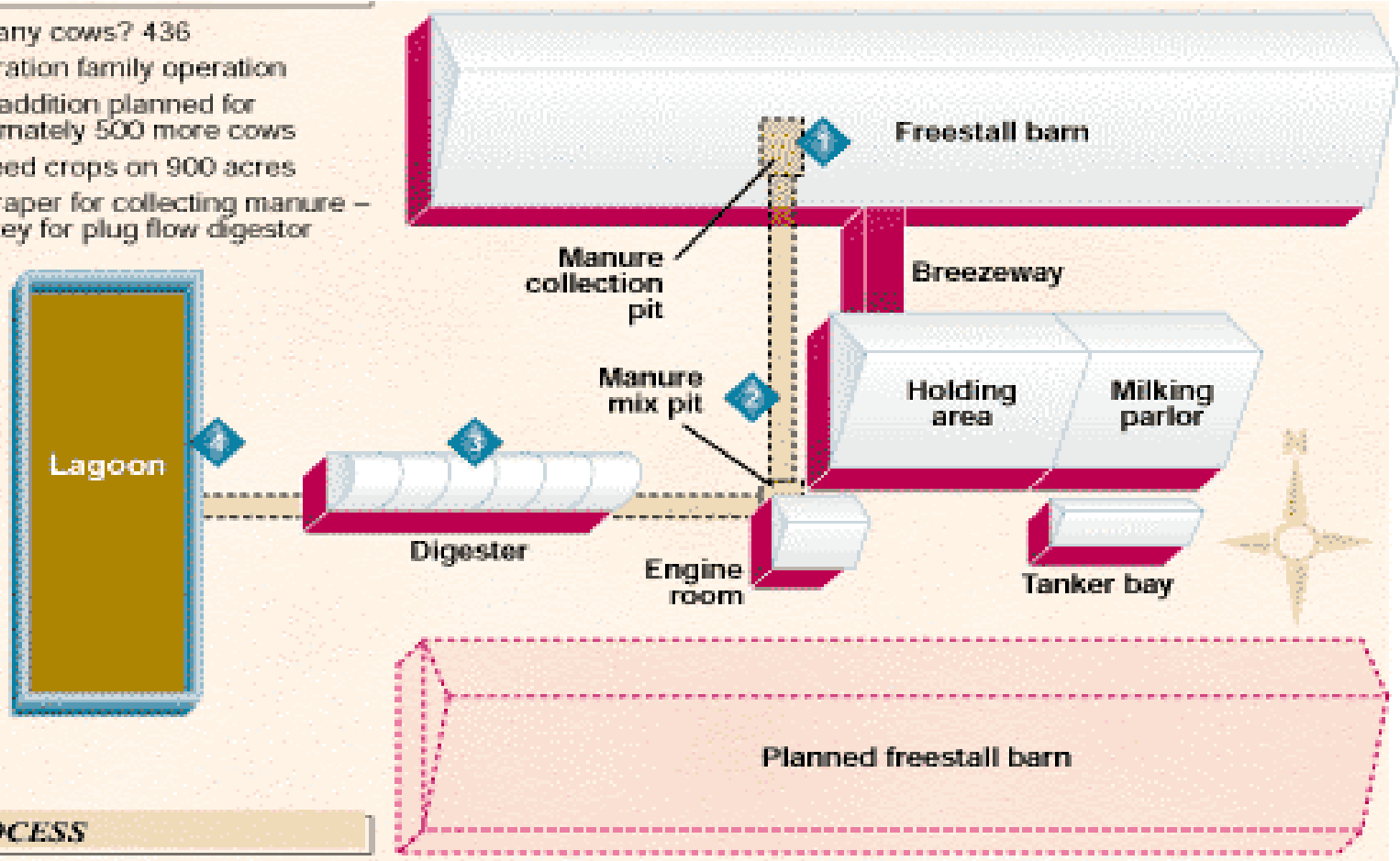


Biogas/CHP Workshop



Plug Flow

- How many cows? 436
- 3-generation family operation
- Future addition planned for approximately 500 more cows
- Grow feed crops on 900 acres
- Use scraper for collecting manure – this is key for plug flow digester



THE PROCESS

Plug Flow

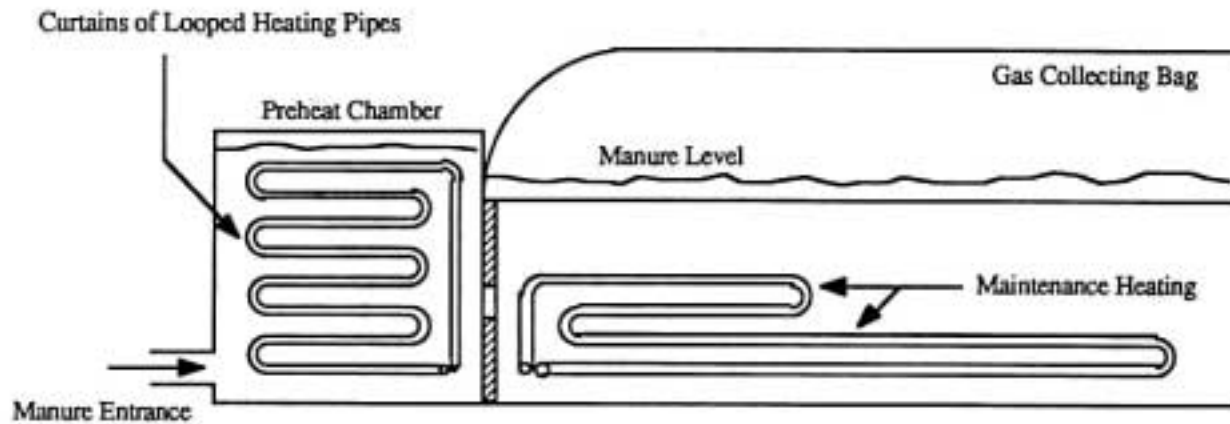
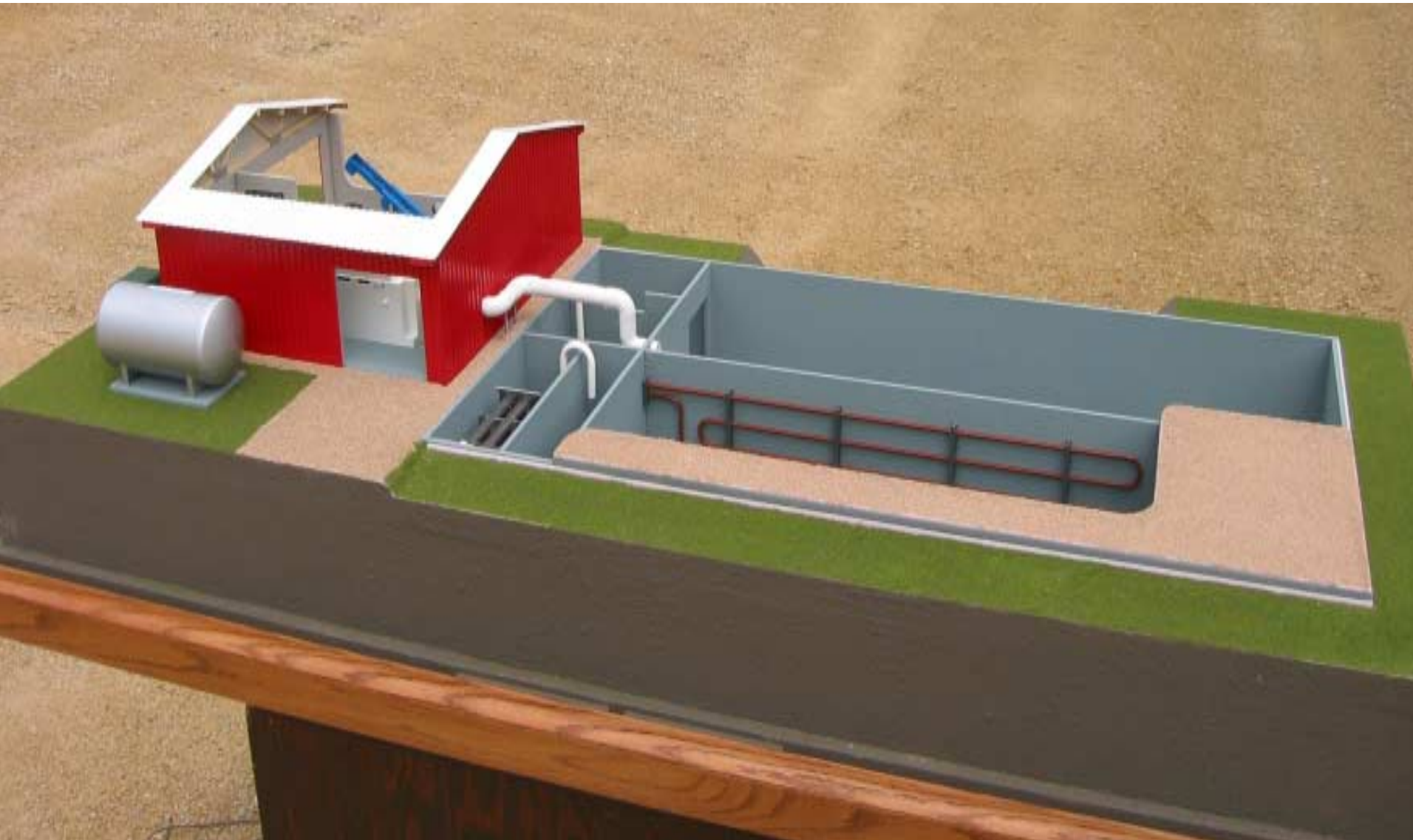


Figure 22. Simplified heating loop in plug-flow digester.

Modified Plug Flow

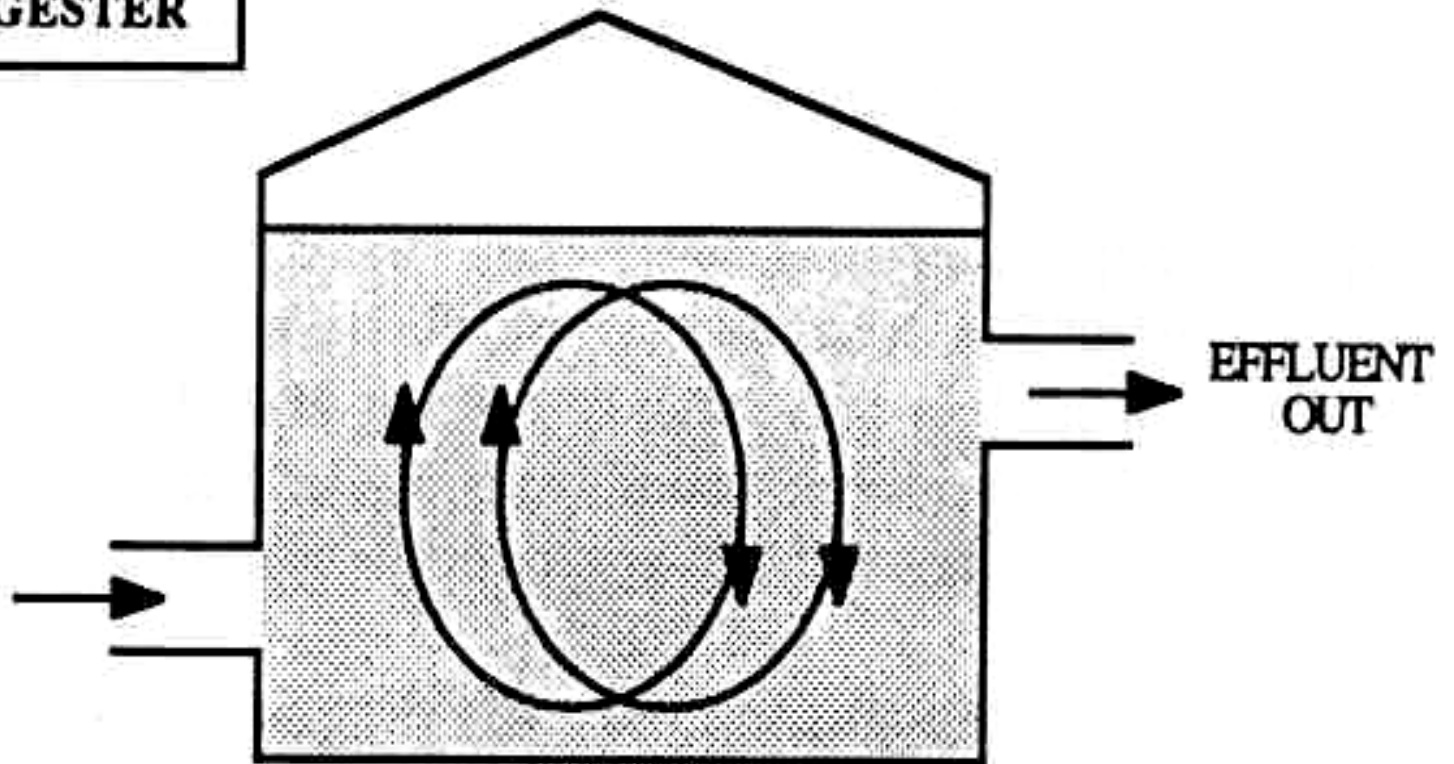


Modified Plug Flow

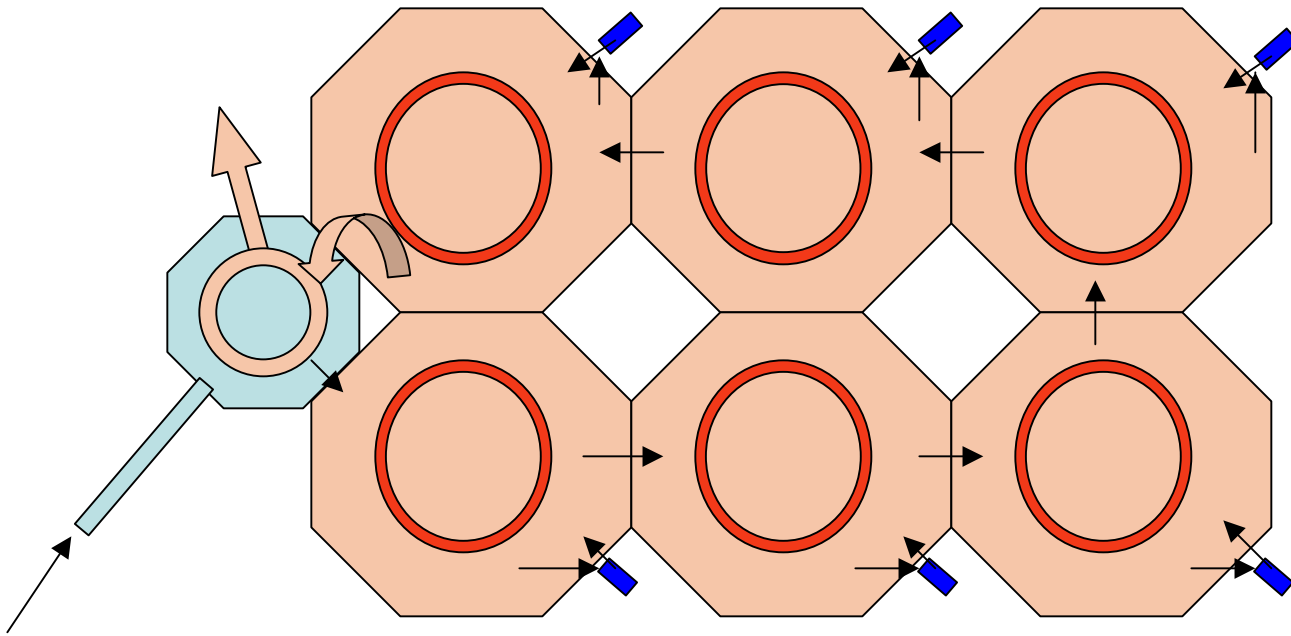


MIXED DIGESTER

SLURRY
IN



EFFLUENT
OUT



Bio-Cav

Sonication

More gas in less time

4 Ways Better

- Above ground / Modular
- Positive Mixing
- Better Temperature Control
- Sonification

Biogas/CHP Workshop

